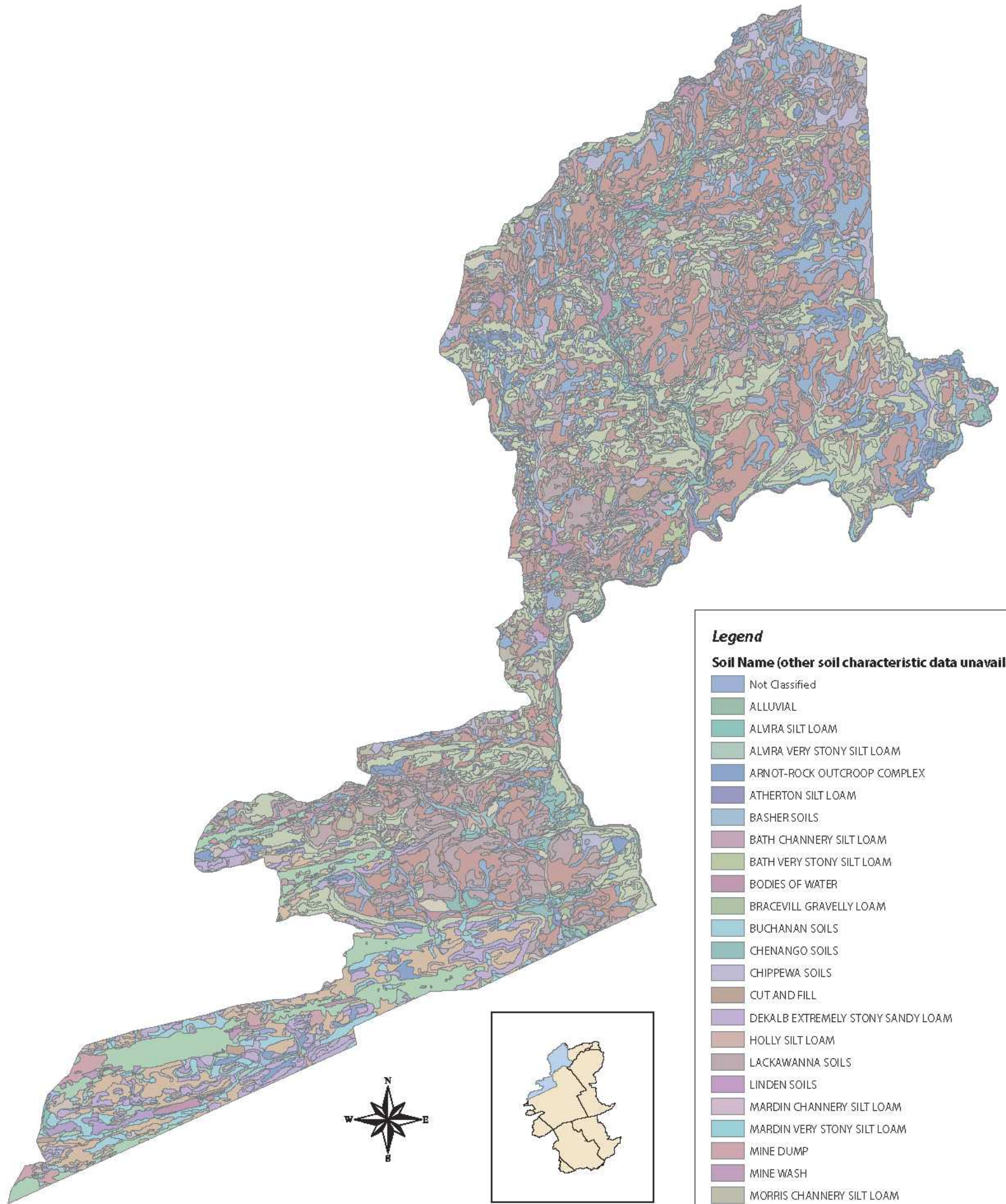


# MAP 1-12 SOIL NAMES IN LUZERNE COUNTY LEHIGH RIVER WATERSHED



## Legend

### Soil Name (other soil characteristic data unavailable)

- Not Classified
- ALLUVIAL
- ALMIRA SILT LOAM
- ALMIRA VERY STONY SILT LOAM
- ARNOT-ROCK OUTCROOP COMPLEX
- ATHERTON SILT LOAM
- BASHER SOILS
- BATH CHANNERY SILT LOAM
- BATH VERY STONY SILT LOAM
- BODIES OF WATER
- BRACEVILL GRAVELLY LOAM
- BUCHANAN SOILS
- CHENANGO SOILS
- CHIPPEWA SOILS
- CUT AND FILL
- DEKALB EXTREMELY STONY SANDY LOAM
- HOLLY SILT LOAM
- LACKAWANNA SOILS
- LINDEN SOILS
- MARDIN CHANNERY SILT LOAM
- MARDIN VERY STONY SILT LOAM
- MINE DUMP
- MINE WASH
- MORRIS CHANNERY SILT LOAM
- MORRIS VERY STONY SILT LOAM
- MUCK
- OQUAGA AND LORDSTOWN
- POCONO EXTREMELY STONY SANDY LOAM
- POCONO GRAVELLY SANDY LOAM
- POPE SOILS
- REXFORD LOAM
- SHELMADINE SOILS
- STRIP MINE
- URBAN LAND
- VOLUSIA VERY STONY SILT LOAM
- WAYLAND SOILS
- WEIKERT AND KLINESVILLE SOILS
- WELLSBORO SOILS
- WURTSBORO SOILS
- WYOMING GRAVELLY LOAM

Source: USDA Natural Resources Conservation Service

3 1.5 0 3 Miles

